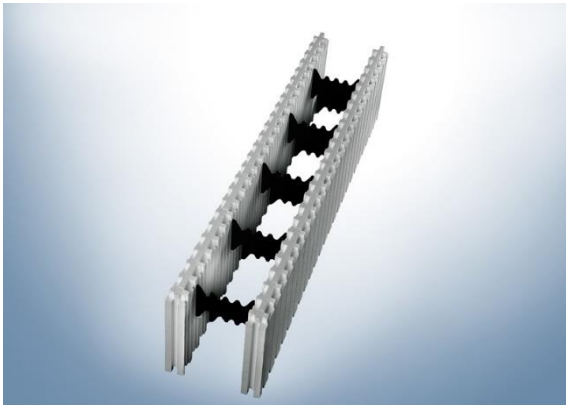


Cenník platný od 01.06.2021

POLYFORM, s.r.o.
Terézie Vansovej 10
065 03 Podolíneec

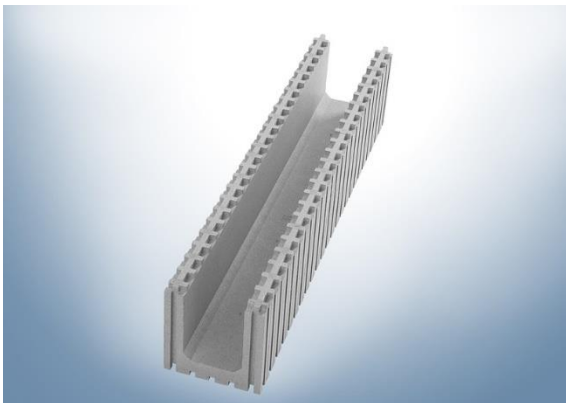
www.polyform.sk
info@polyform.sk

Series 25 cm Elements



Odporúčané použitie na interiérové steny,
ploty, bazény, garáže.

25 cm Štandardná tvarovka **E02**
125 x 25 x 25 cm s plastovou spojkou
Cena za kus: 12,57 EUR
Cena za 1m²: 40,22 EUR
3,2 kusa tvaroviek = 1 m²



Fasádna prekladová tvarovka **E03**
125 x 25 x 25 cm
Cena za kus: 9,36 EUR



Fasádna šalovacia tvarovka **E04**
125 x 25 x 25 cm
Cena za kus: 7,93 EUR



Výškové vyrovnanie **E05**

125 x 25 x 3,5 cm

Cena za kus: 3,25 EUR

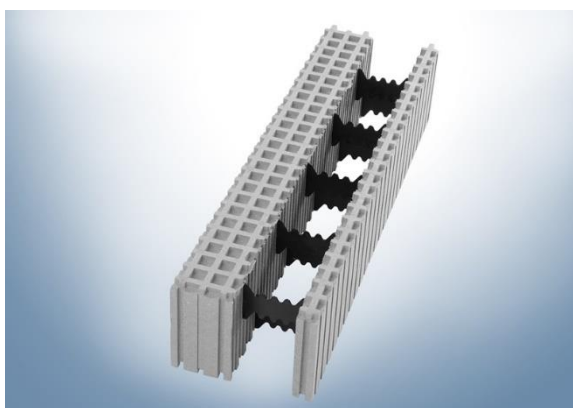


Koncoví prvok **N12**

Pre tvárnice pre E02 alebo N21 a N31

Cena za kus: 1,30 EUR

Series 35 cm Elements



Odporúčané použitie na exteriérové steny
pre nízkoenergetické domy.

35 cm Štandardná tvarovka **N21**

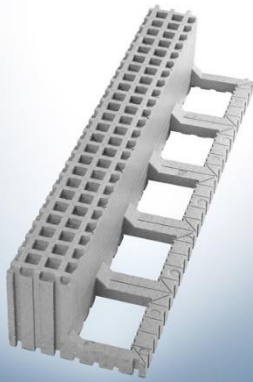
125 x 35 x 25 cm s plastovou spojkou

Cena za kus: 17,38 EUR

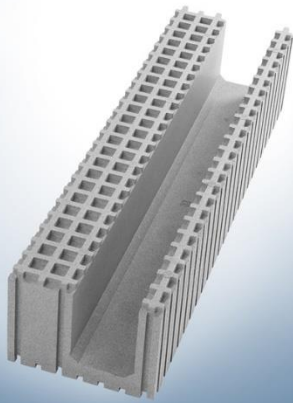
Cena za 1m²: 55,62 EUR

3,2 kusa tvaroviek = 1 m²

VARIANTHAUS®-GROUP



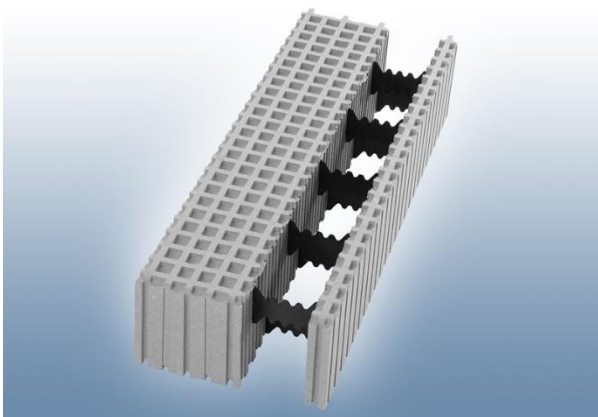
Fasádna šalovacia tvarovka **N22**
125 x 35 x 25 cm
Cena za kus: 12,87 EUR



Fasádna prekladová tvarovka **N23**
125 x 35 x 25 cm
Cena za kus: 15,34 EUR

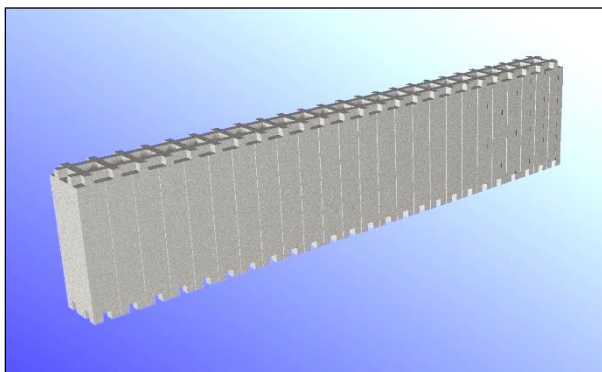


Series 45 cm Elements



Odporúčané použitie na exteriérové steny pre pasívne domy.

45 cm Pasívna tvarovka **N31**
125 x 45 x 25 cm s plastovou spojkou
Cena za kus: 22,71 EUR
Cena za 1m²: 72,67 EUR
3,2 kusa tvaroviek = 1 m²



Zatepľovací adaptér **HCE3**
Adaptér pre fasádne prekladové tvarovky N22/ N23 (45 cm hrúbku steny)
125 x 10 x 25 cm
Cena za kus: 8,58 EUR



1. všetky 25 cm tvarovky sú z bieleho polystyrénu
2. všetky 35 a 45 cm tvarovky sú zo sivého polystyrénu
3. Ceny sú bez DPH
4. Ceny sú bez nákladov na dopravu
5. Cena prepravy k zákazníkovi po vyžiadaní a kalkulácii

When your architect need:

- EU Certifikácia
- ETA -European Technical Assessment
- Technické detaily
- Komplexná výkresová dokumentácia

Pošlite nám e-mail. Ďakujeme!



European Technical Assessment **ETA 16/0325 – version 02**
of 31/07/2019

General Part

Technical Assessment Body issuing the ETA and designated according to Article 29 of the Regulation (EU) No 305/2011: Technický a skúšobný ústav stavebný, n. o.

Trade name of the construction product	VARIANT-HAUS®
Product family to which the construction product belongs	Product area code: 4 Non-load-bearing permanent shuttering system based on hollow blocks of insulating materials for construction of external walls, internal walls above or below ground, and partitions, for buildings
Manufacturer	VARIANT-HAUS-GROUP ICF Manufacturing & Sales GmbH Theodor-Heuss-Allee 112 D 60486 Frankfurt/Main Germany
Manufacturing plant	POLYFORM, s.r.o. Terezie Vansovej 10 065 03 Podolinec Slovak Republic
This European Technical Assessment contains	46 pages including 2 annexes which form an integral part of this assessment.
This European Technical Assessment is issued in accordance with regulation (EU) No 305/2011, on the basis of	ETAG 009, edition June 2002, used as European Assessment Document (EAD).
This version replaces	ETA 16/0325 – version 01, issued on 20/06/2016